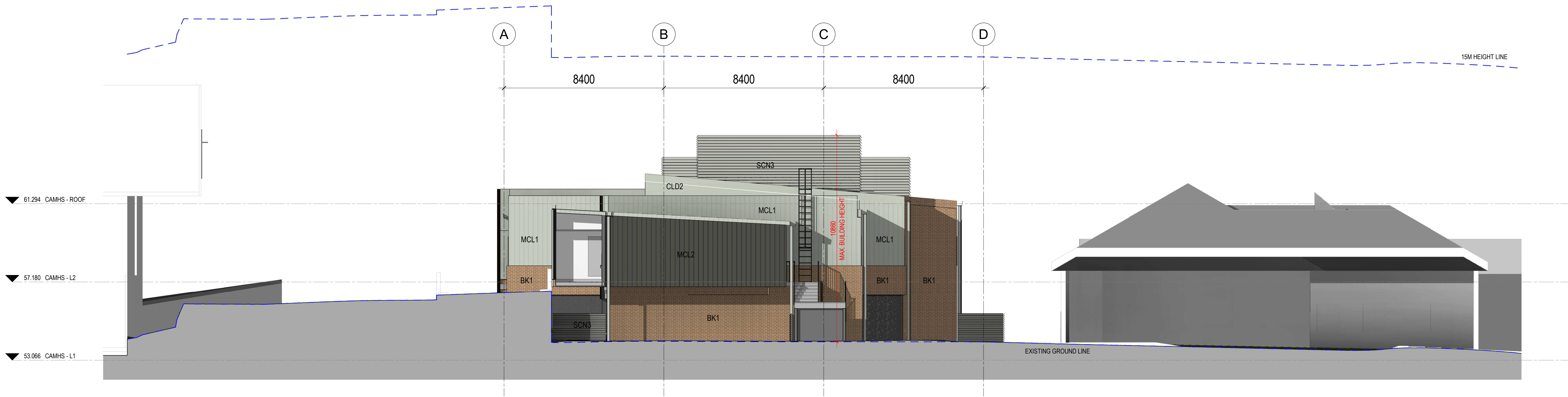


1 EAST ELEVATION  
SCALE: 1:100



2 WEST ELEVATION  
SCALE: 1:100

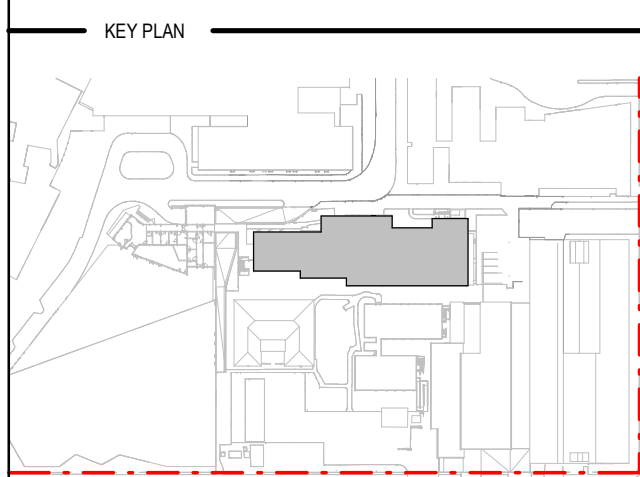
## MATERIALS LEGEND

GL-01	<b>TWO LAYER GLAZING WINDOWS WITH INTEGRAL VENETIAN BLINDS IN POWDERCOATED ALUMINUM FRAME</b> WINDOW SIZES AS DRAWN . EXTERNAL FIXED DOUBLE GLAZED IN LOW-E COATING, INTERNAL GLAZING TO BE VIRIDIAN ASSAULT GUARD ULTRA 14.28mm, ALLOW FOR JOCKEY SASH FRAMES WITH TAMPER PROOF COMPONENTS AND ANTI-LIGATURE BLIND CONTROL KNOB. SUBMIT WINDOW SHOP DRAWINGS FOR REVIEW BY ARCHITECT.
GL-02	<b>VISION PANEL</b> WINDOW SIZES AS DRAWN . FIXED DOUBLE GLAZED IN LOW-E COATING. SUBMIT WINDOW SHOP DRAWINGS FOR REVIEW BY ARCHITECT.
GL-03	<b>SECURE COURTYARD SCREEN</b> <b>VIRIDIAN ASSAULT GUARD ULTRA 14.28mm</b> LAID OUT IN HORIZONTAL PANELS, PATTERN AS DRAWN; FIXED TO STRUCTURAL FRAME (OUTSIDE THE COURTYARD) AND ST LUCIA SUITE FRAME TO THE INTERNAL SIDE OF THE COURTYARD WITH TAMPER PROOF, ANTI-LIGATURE FIXINGS, FRAMING TO BE POWDERCOATED IN COLOUR MONUMENT

SCN1	<b>SECURE COURTYARD SCREEN</b> <b>CUSTOM PERFORATED POWDERCOATED METAL SHEET</b> LAID OUT IN HORIZONTAL PANELS, PANEL SIZE AND PATTERN AS DRAWN; FIXED TO STRUCTURAL FRAME (OUTSIDE THE COURTYARD) AND ST LUCIA SUITE FRAME TO THE INTERNAL SIDE OF THE COURTYARD WITH TAMPER PROOF, ANTI-LIGATURE FIXINGS; FRAMING AND METAL SHEET PANEL TO BE POWDERCOATED IN COLOUR MONUMENT
SCN2	<b>SECURE UNDERCROFT SCREEN</b> <b>LOCKER GROUP 'CHAMPAGNE' PERFORATED POWDERCOATED METAL SHEET</b> LAID OUT HORIZONTALLY; STANDARD PANEL SIZE 2440mm X 1220mm; FACE FIXED TO GALVANISED STRUCTURAL FRAME; FRAMING AND METAL SHEET PANEL TO BE POWDERCOATED IN COLOUR MONUMENT
SCN3	<b>SECURE PLANT AREA SCREEN</b> <b>LOUVRE GRILLE</b> LAID OUT HORIZONTAL PATTERN; PANEL SIZE MAX. 6m LONG AT 800mm SPACING, FACE FIXED TO GALVANISED STRUCTURAL FRAME WITH MITRED JOINT ON CORNERS

MRF1	<b>METAL DECK ROOF IN LYSAUGHT LONGLINE 305 HIGH STRENGTH PROFILE IN COLOUR SHALE GREY</b> RAINWATER GOODS FINISH IN COLORBOND MONUMENT – 200/250mm HALF ROUND GUTTER AND 150mm DIA. DOWNPIPES <b>ALL SOFFITS &amp; EAVES LINED IN CSR CEMINTEL SURROUND FAÇADE PANEL IN COLOUR WHITEISH BASE</b>
CLD1	<b>CEMINTEL SURROUND : COLOUR - WHITEISH BASE</b>
CLD2	<b>CEMINTEL SURROUND : COLOUR - SHALE GREY</b>
CLD3	<b>VITRAPANEL - COMPRESSED FIBRE CEMENT CLADDING WITH WALL GRAPHIC APPLICATION TO SURFACE</b>

MCL1	<b>METAL WALL CLADDING IN LYSAUGHT LONGLINE 305 HIGH STRENGTH PROFILE IN COLOUR SHALE GREY</b>
MCL2	<b>METAL WALL CLADDING IN LYSAUGHT LONGLINE 305 HIGH STRENGTH PROFILE IN COLOUR MONUMENT</b>
BK1	<b>BRICK WALL VENEER : AUSTRAL SYMMETRY ASPHALT</b>
BLK2R	<b>190mm REINFORCED CORE FILLED BLOCKWORK WITH RENDERED GREY OXIDE FINISH</b>



REV	DESCRIPTION	DRW	DATE
A	ISSUED FOR DESIGN DEVELOPMENT	DM	19/01/2022
B	ISSUED FOR TENDER	CS	07/07/2022

**COPYRIGHT**  
ALL RIGHTS RESERVED. THIS WORK IS COPYRIGHTED AND CANNOT BE REPRODUCED OR COPIED IN ANY FORM OR BY ANY MEANS (GRAPHIC, ELECTRONIC OR MECHANICAL, INCLUDING PHOTOCOPYING, WITHOUT THE WRITTEN PERMISSION OF THE PRINCIPAL UNDER THE TERMS OF THE CONTRACT. ANY LICENCE, EXPRESS OR IMPLIED, TO USE THE DOCUMENT FOR ANY PURPOSE WHATSOEVER IS RESTRICTED. TO THE TERMS OF THE AGREEMENT OR IMPLIED AGREEMENT WITH THE PRINCIPAL UNDER THE TERMS OF THE CONTRACT.

**DIMENSIONS**  
USE FIGURED DIMENSIONS. DO NOT SCALE. CONTRACTORS MUST VERIFY ALL DIMENSIONS ON THE SITE BEFORE COMMENCING ANY WORK OR MAKING ANY SHOP DRAWING WHICH MUST BE SUBMITTED AND REVIEWED BEFORE MANUFACTURE.

**FIXTURES, FITTINGS & EQUIPMENT SPECIFICATIONS**  
SUBSTITUTE FIRE EQUIPMENT SPECIFICATIONS  
THE FIT OUT DESIGN AND DOCUMENTATION HAS BEEN COMPLETED ON THE BASIS OF FIRE AND EQUIPMENT ADVISED TO THIS OFFICE AT THE TIME OF BRIEFING THE DESIGN. THE DESIGN PROVIDES FOR FIRE AND EQUIPMENT REQUIRES SPATIAL ALLOCATIONS, SERVICES, LOADING AND ACCESS CLEARANCES AND WHERE APPROPRIATE SERVICES REQUIREMENTS. HANGING OF REIGARS FOR SUBROCKING FIXTURES AND FITTINGS. IT SHOULD BE NOTED THAT SUBSTITUTE FIRE OR EQUIPMENT WITH ALTERNATE SPECIFICATIONS SHOULD NOT BE PRODUCED PRIOR TO VALIDATING THOSE SPECIFICATIONS AGAINST THE ITEM CONTROL SCHEDULE AND DESIGN PROVISIONS IN THE MODEL. THIS OFFICE ACCEPTS NO RESPONSIBILITY FOR THE PROCUREMENT OF SUBSTITUTE FIRE AND EQUIPMENT WHICH HAS NOT BEEN REVIEWED AND VALIDATED AGAINST THIS ORIGINAL DESIGN PROVISIONS.

**SERVICE POINTS DISCLAIMER**  
THE SERVICE POINTS IDENTIFIED ON THESE DRAWINGS HAVE BEEN OVERLAYED FROM THE BUILDING SERVICES ENGINEERING MODEL, AND ARE PROVIDED FOR INFORMATION AND SET-OUT PURPOSES ONLY. WE HAVE BEEN ADVISED BY THE SERVICES ENGINEERS THAT THE POINTS REPRESENTED ON THESE DRAWINGS ARE CORRECT AT THE TIME OF PUBLICATION. THIS OFFICE DOES NOT WARRANT THE ACCURACY OF THIS DATA. REFER TO THE BUILDING SERVICES ENGINEERING DOCUMENTATION FOR THE INSTALLATION OF THE SERVICES POINTS AND THE INTERFACE BETWEEN THE SERVICES POINTS AND THE RESPECTIVE ENGINEERING SYSTEMS.

## DESIGN DEVELOPMENT

ARCHITECTS



ABN: 21 124 476 885  
LEVEL 4, 89 YORK STREET  
SYDNEY NSW 2000, AUSTRALIA  
PH: (02) 9259 4600 FAX: (02) 9880 2400

THIS ARCHITECTURAL DESIGN IS THE COPYRIGHT OF  
SALTER THOMAS HANLEY ARCHITECTS PTY LTD ABN 21 124 476 885  
AND SHALL NOT BE REPRODUCED WITHOUT THEIR WRITTEN PERMISSION  
- CLIENT

## HEALTH INFRASTRUCTURE

PROJECT

## NEPEAN HOSPITAL CAMHS

Derby Street, Kingswood, NSW, 2747

DRAWING TITLE

## ELEVATIONS

SCALE	DATE	DRAWN BY	CHECKED
As indicated@A0	19/01/21	CJ	EM
PROJECT No	DRAWING No	REVISION	
10442	NHR-STH-DRW-ARC-MHS-A50-002	B	